

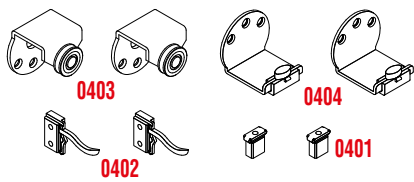
SERIE 400 Linea per ante in legno sovrapposte

SERIES 400 Overlapping wooden doors line

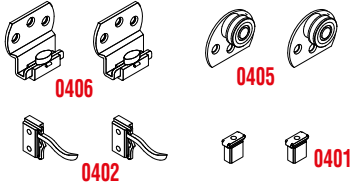


Sistemi scorrevoli per mobili / Sliding systems for furniture

KIT 0403-404 - MAX 30 KG



KIT 0405-406 - MAX 30 KG

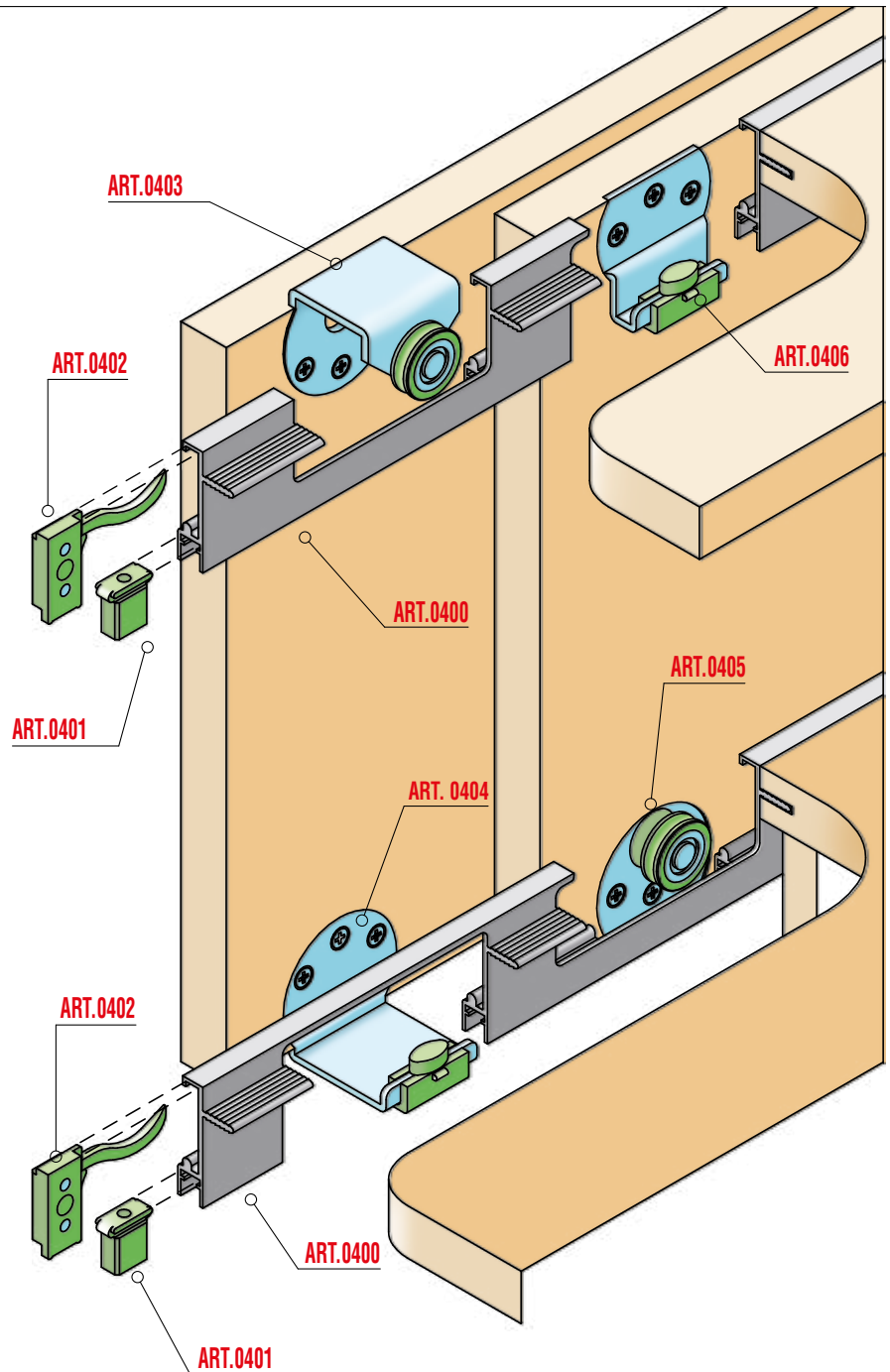


Legenda KIT

0401	Fermo superiore <i>Upper stopper</i>
0402	Fermo inferiore <i>Lower stopper</i>
0403	Carrello superiore anta esterna <i>Upper truck for outer door</i>
0404	Guida inferiore anta esterna <i>Lower runner for outer door</i>
0405	Carrello inferiore anta interna <i>Lower truck for inner door</i>
0406	Guida superiore anta interna <i>Upper runner for inner door</i>

Legenda altri componenti

0400	Profilo alluminio superiore inferiore <i>Upper and lower aluminium profile</i>
-------------	-----------------------------------------------------------------------------------



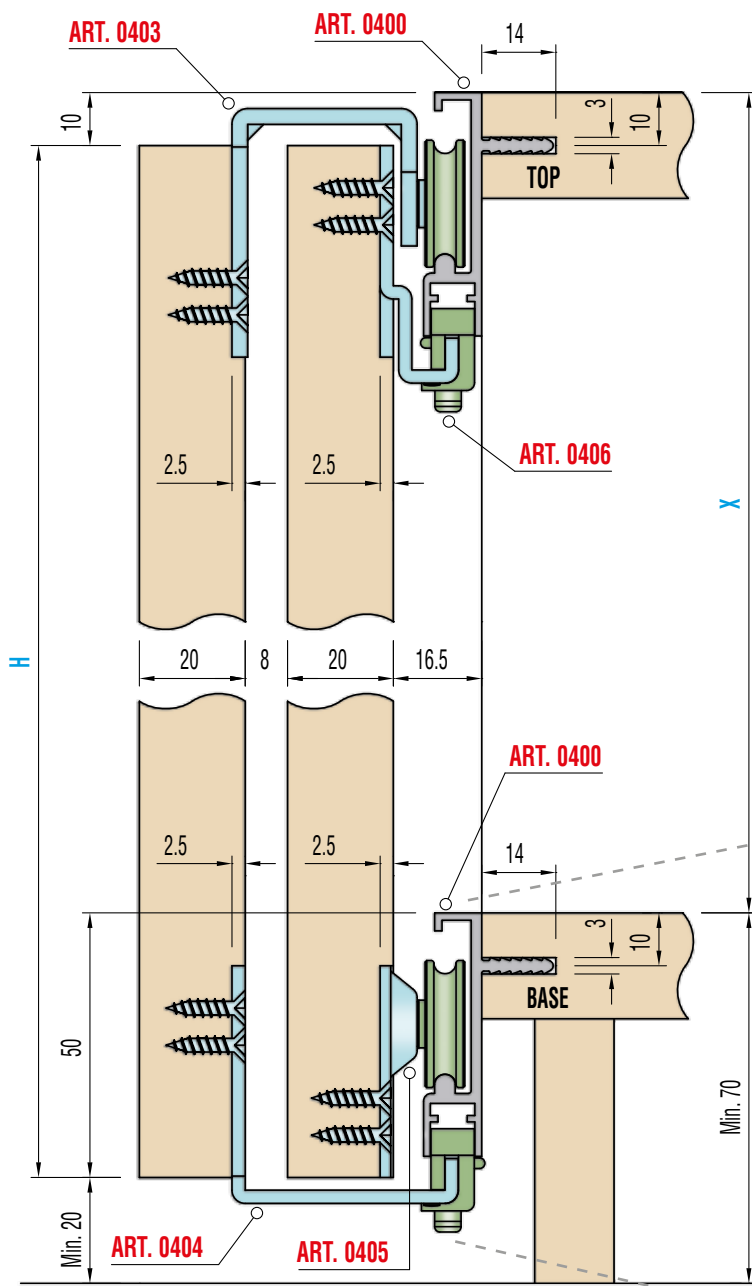


SERIE 400 Linea per ante in legno sovrapposte

SERIES 400 Overlapping wooden doors line

Sistemi scorrevoli per mobili / Sliding systems for furniture

Sezione verticale / Vertical section

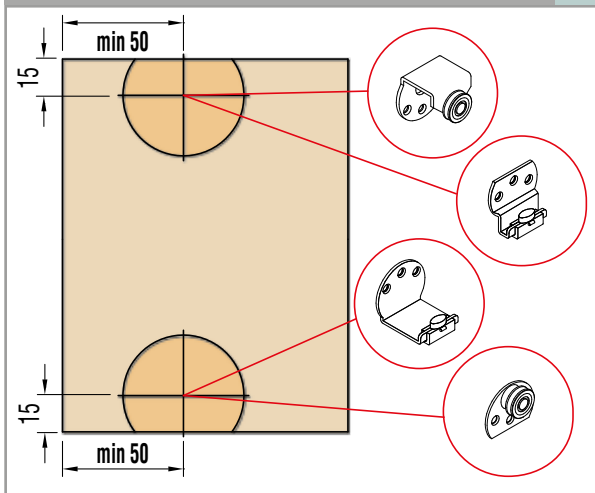


H =	X+40
-----	------

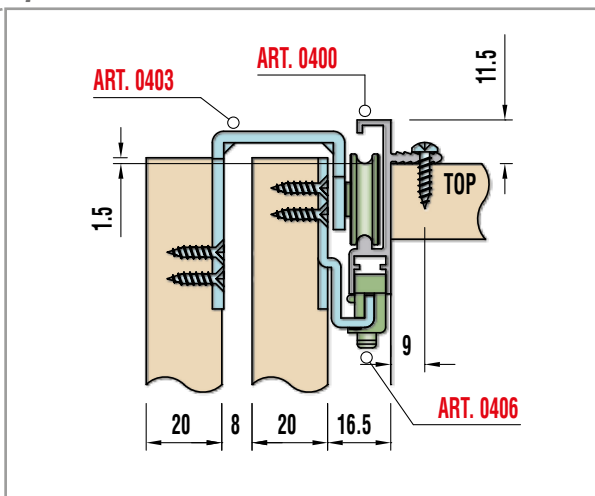
Spessore massimo anta 20 mm.
Maximum door thickness 20 mm.

Peso massimo anta Kg 30.
Maximum door weight Kg 30.

Schema Foratura ante / Doors drilling



Variante Special version



Schema di montaggio / Schema di montaggio

